

LAYOUT

ACCESSORIES COLLECTION

SPRING SUMMER 2025



DENIM 01



DENIM 02



DENIM 03



WOMAN 01



WOMAN 02



WOMAN 03



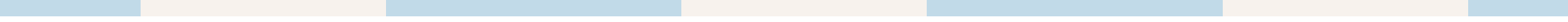
SPORTSWEAR



MAN 01



MAN 02



THE COLLECTION CONTAINS

- INTRODUCTION TO SEASONAL MOODS
- 9 THEMES SPLIT UP BY TYPE OF CLOTHING
- 3 DENIM LINES, 3 WOMEN'S LINES, 2 MEN'S LINES, 1 SPORT LINE
(PACKAGES CAN ALSO BE PURCHASED SEPARATELY)
- ONE NAME, ONE BRAND, ONE COLOUR PALETTE FOR EACH LINE
- COORDINATED GRAPHIC DEVELOPMENT OF FASHION
ACCESSORIES FOR A TOTAL OF 10/15 ITEMS PER LINE
ALL IN PDF VECTOR FORMAT
- INSPIRATIONAL PHOTOS AND IMAGES

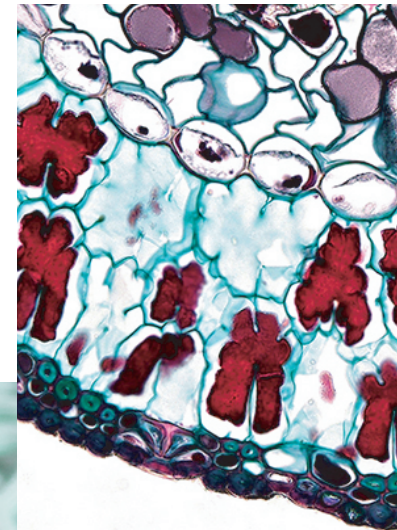
SPORTSWEAR HEON



off-white

2246C

1797C



This direction will become more intelligent through the use of dynamic materials. Designers are driving forward futuristic iridescence to create otherworldly effects.



COLOURS AS HIGHLY
EFFECTIVE INDICATORS



EMBROIDERED PATCH



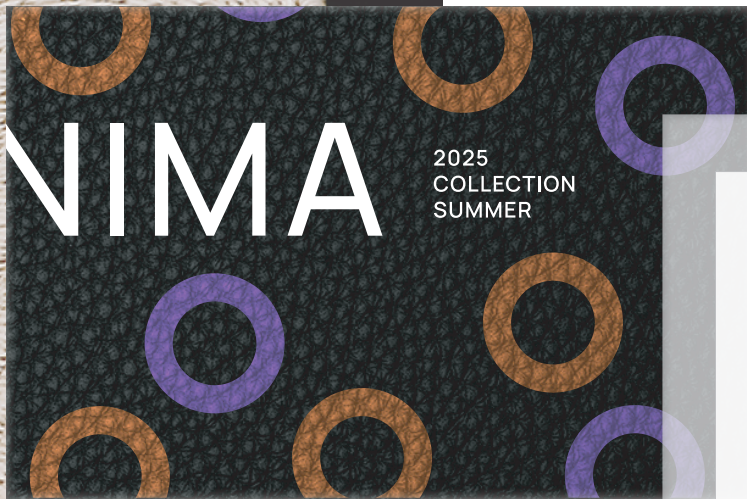
LEATHER LABEL



COTTON WOVEN LABEL



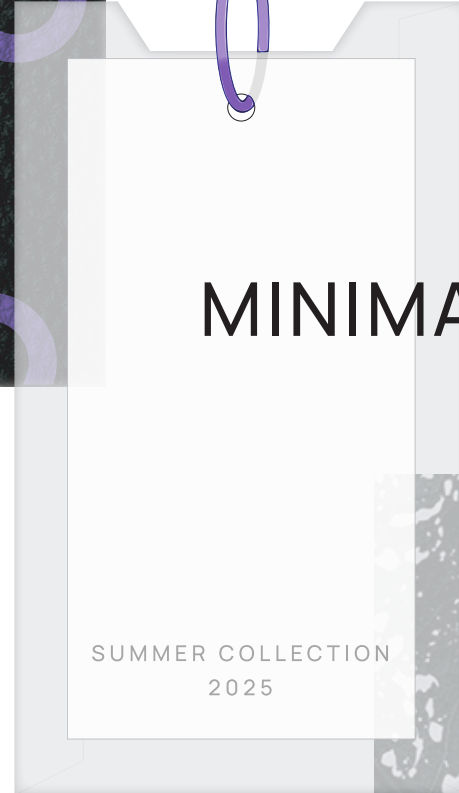
CHROMATIC AND MATERIAL FUSION



LEATHER LABEL

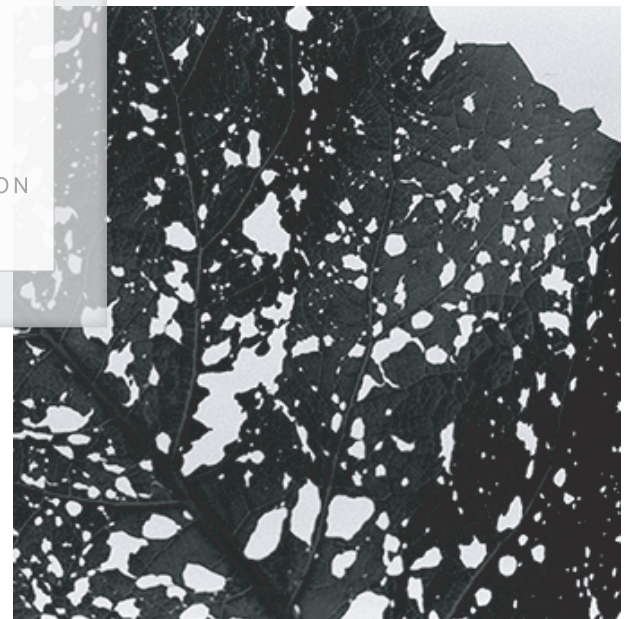


METAL ZIP PULLER



HANGTAG
TRANSPARENT PAPER

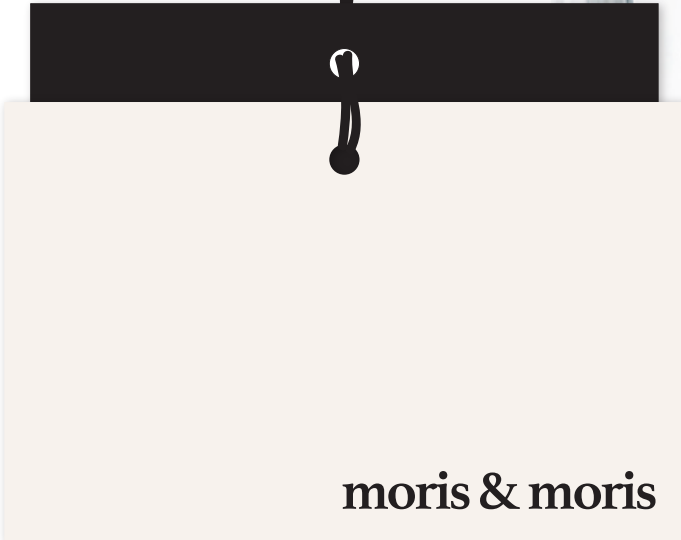
A POWERFUL AND MYSTERIOUS VIOLET
A HOT TONE CONSCIOUS AND UNDER-
STANDING, THE BLACK AND THE WHITE.



PROVIDING WITH A CALM SPACE ON WHICH TO REST

moris & moris

WOVEN RIBBON PLUS WOVEN LABEL



HANGTAG
MATTE PAPER
HOT FOIL STAMP



LAYOUT

ACCESSORIES COLLECTION

SPRING SUMMER 2025

#03

www.adweib.com